



UPK8-DB



UPK4-DB

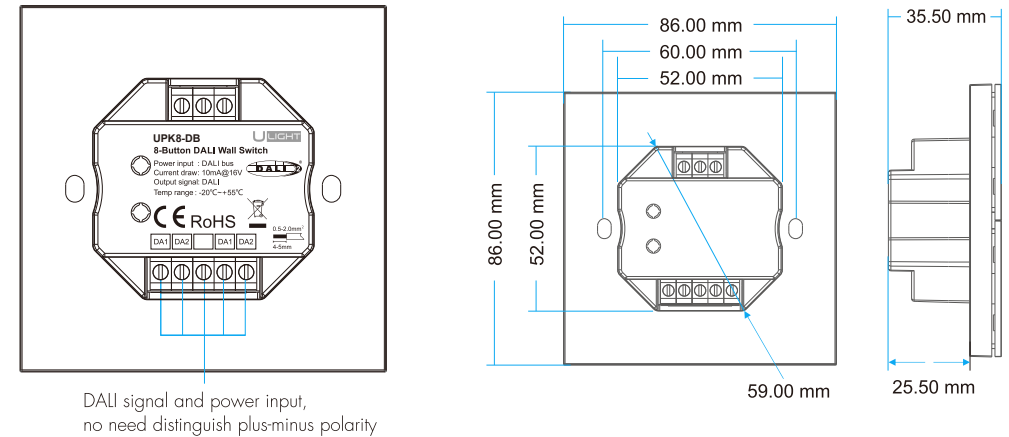


Features

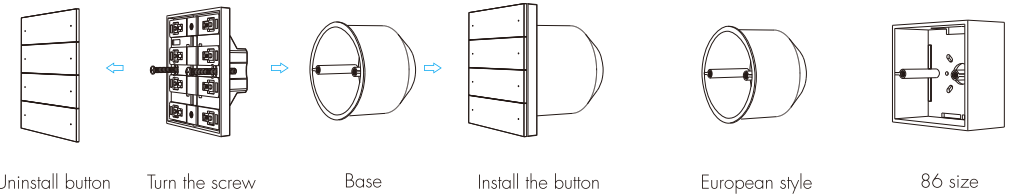
- DALI-2 input device with 8/4 push buttons according to IEC62386-101, 103, 301, 332.
- Suitable for integration and in combination with DALI-2 compliant central control units.
- Easy configuration via DALI-2 compliant central controller USB interface.
- Multimaster capable, multiple modules can be installed on the DALI-line.
- Supports feedback functionality, each button have blue LED indicator.
- Powered by DALI bus.
- Provide a variety of button stickers, which can flexibly define the functions of each button.  
Button label: ON/OFF, ON, OFF, scene, brightness+/-, color temperature+/-, etc.

Technical Parameters

Input and Output		Safety and EMC		Environment	
Power	DALI bus	EMC standard	EN IEC 55015/ EN IEC 61547	Operation temperature	Ta: -20 °C ~ +55 °C
Static current	10mA@16VDC		ETSI EN 301 489-1/-3	Case temperature (Max.)	Tc: +65 °C
Output signal	DALI	Safety standard	EN 61347-1/-2	IP rating	IP20
		Certification	CE RoHS DALI-2	<b>Package</b>	
		<b>Warranty</b>		Size	L112xW112xH50mm
		Warranty	5 years	Gross weight	0.169kg

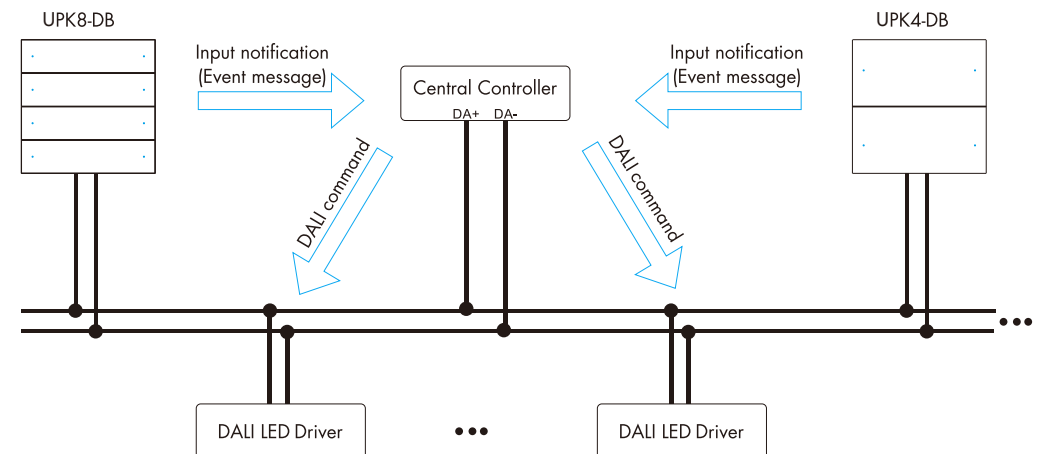


Installation diagram:



Typical base as below:

Wiring Diagram



## Functional Application

The 8/4 button DALI wall switch (UPK8-DB/UPK4-DB) can be used as input device for the integration in DALI-2 compliant central lighting control systems.

Send the input event to the central control system through the switch button, the central control system receives the event for system judgment and then send DALI command to DALI driver (e.g. DALI dimming controller, DALI dimming driver), DALI driver executes dimming according to the command.

The 8/4 button DALI wall switch (UPK8-DB/UPK4-DB) provide 8/4 instances of type 1 (input device – push button). Instance 1-8: Push Button, Instance Type 1 (according IEC62386-301, Input Devices – Push Button).

According to the standard the following input notifications are supported:

Event name	Event Information	Description
Button released	00 0000 0000b	The button is released
Button pressed	00 0000 0001b	The button is released
Short press	00 0000 0010b	The button is pressed and released, without being pressed quickly again (in case of double press enabled), or the button is pressed and quickly released (in case of double press is disabled)
Double press	00 0000 0101b	The button is pressed and released, quickly followed by another button press
Long press start	00 0000 1001b	The button is pressed without releasing it
Long press repeat	00 0000 1011b	Following a long press start condition the button is still pressed, the event occurs at regular intervals as long as the condition holds
Long press stop	00 0000 1100b	Following a long press start condition, the button is released
Button free	00 0000 1110b	The button has been stuck and is now released
Button stuck	00 0000 1111b	The button has been pressed for a very long time and is assumed stuck.

Additional instance parameters like event filter, event timings (short timer, double timer, repeat timer, stuck timer) can be configured according to IEC62386-301.

The 8/4 button DALI wall switch (UPK8-DB/UPK4-DB) support feedback function (the center controller must support IEC62386-332).

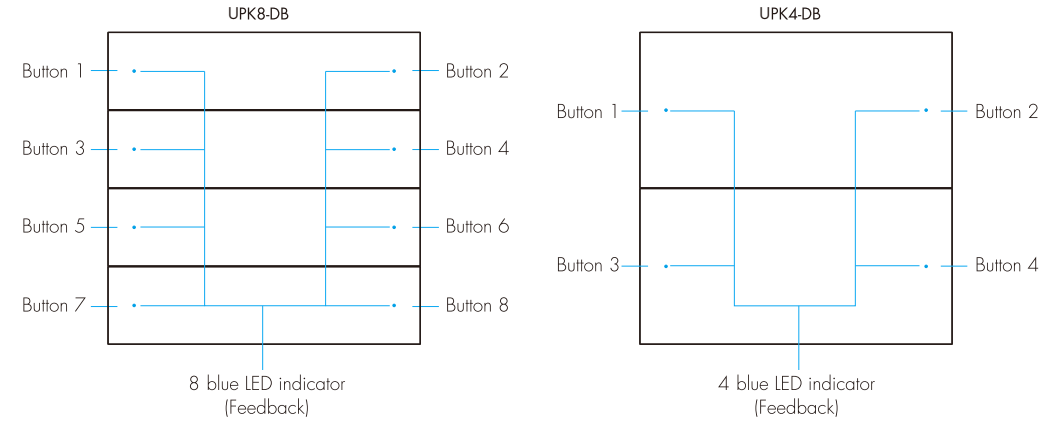
The panel supports feedback to the user on system operation via the status of the blue indicator light.

The default blue indicator is slightly lit.

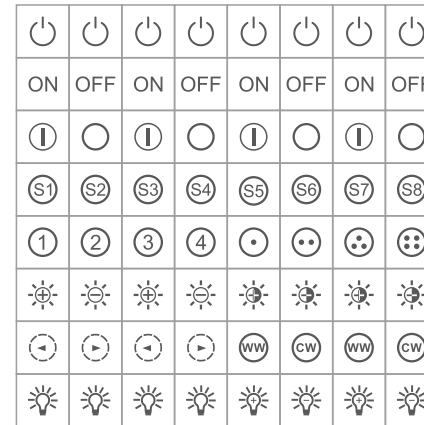
The blue indicator is brighter when the system is commanded to turn on the lights.

When the system is subject to the OFF command, the blue indicator is slightly lit.

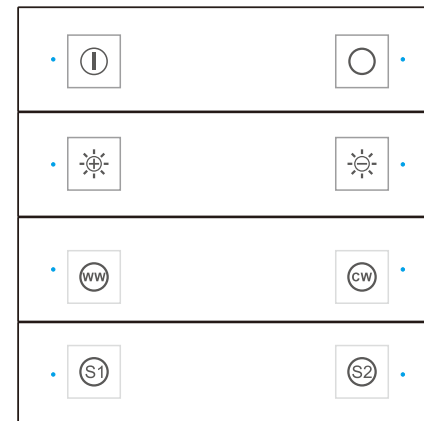
## Push Button Function Label



Provide 64 transparent button stickers, please select the corresponding button sticker according to the button function configuration and paste it on the button:



UPK8-DB example labels



UPK4-DB example labels

